

# Seaside

3 Bedrooms / 2.5 Baths

1,829 sq ft

Sawmill Creek



Elevation B



Elevation C



Elevation FH1



Elevation FH2

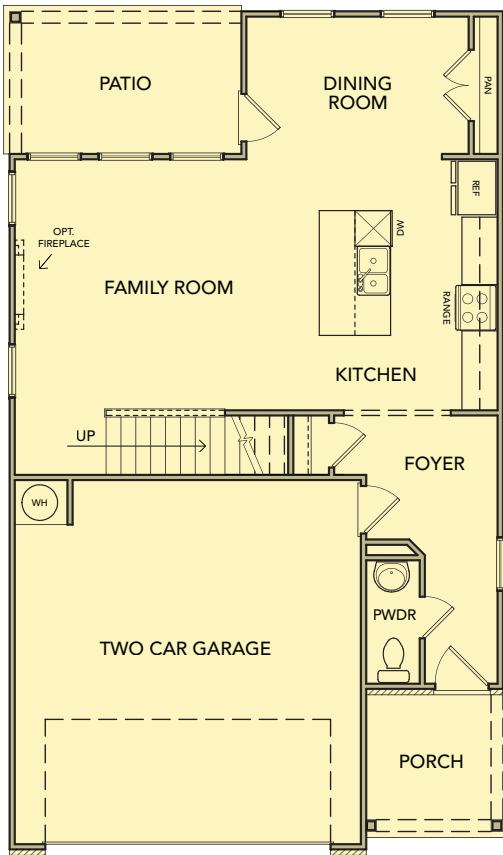


# Seaside

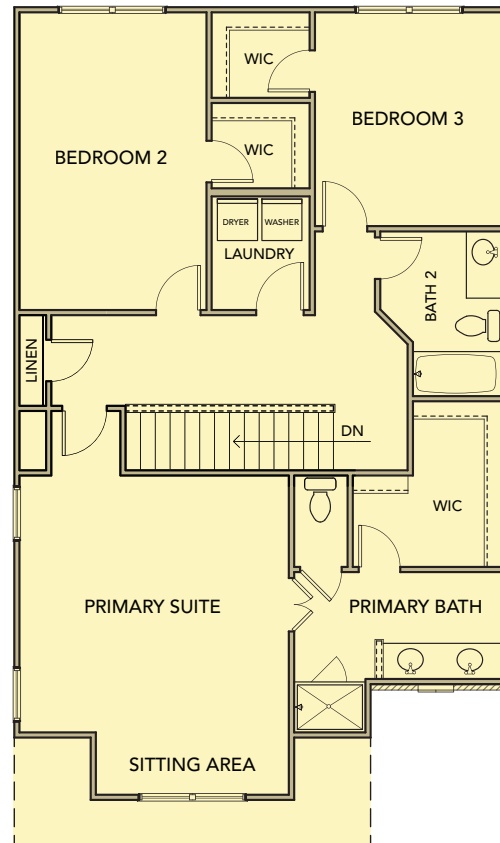
3 Bedrooms / 2.5 Baths

1,829 sq ft

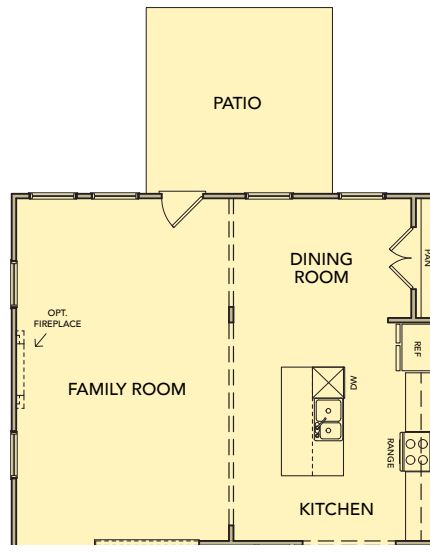
Sawmill Creek



First Floor



Second Floor



First Floor Plan With Opt. Extended Family Room

