

Wisteria

3 Bedrooms / 2.5 Baths

1,912 sq ft

Park Center Pointe



Elevation A



Elevation B



Elevation C

KerleyFamilyHomes.com

*Information believed accurate but not warranted and subject to change without prior notice. All drawings and elevation renderings are artistic representations only. Floor plan details & final decisions to be made by Kerley Family Homes. This document is for informational purposes only and is subject to change without notice. Please contact onsite agent for details regarding availability, lots and options. Updated 12.16.25

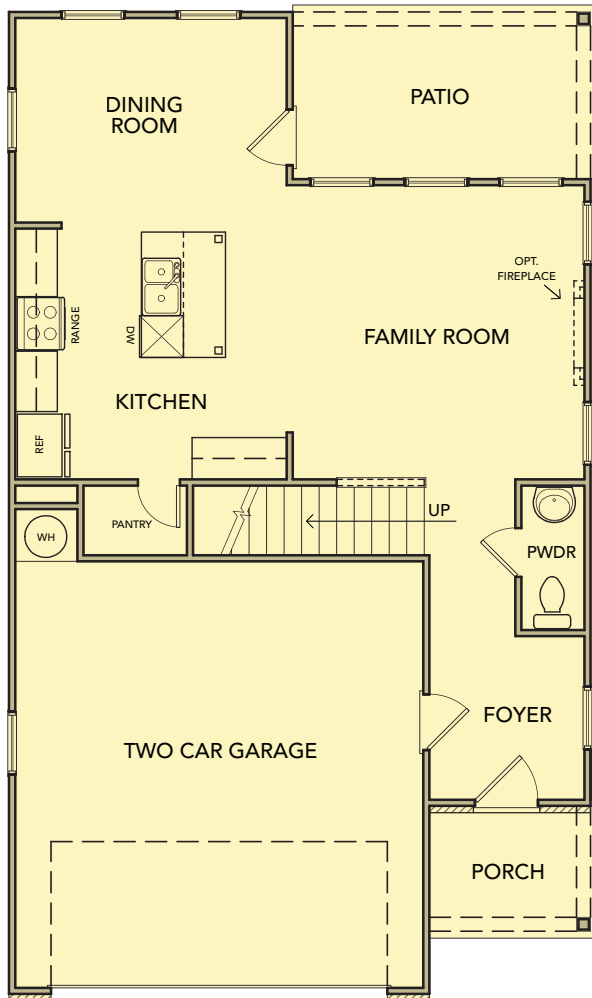


Wisteria

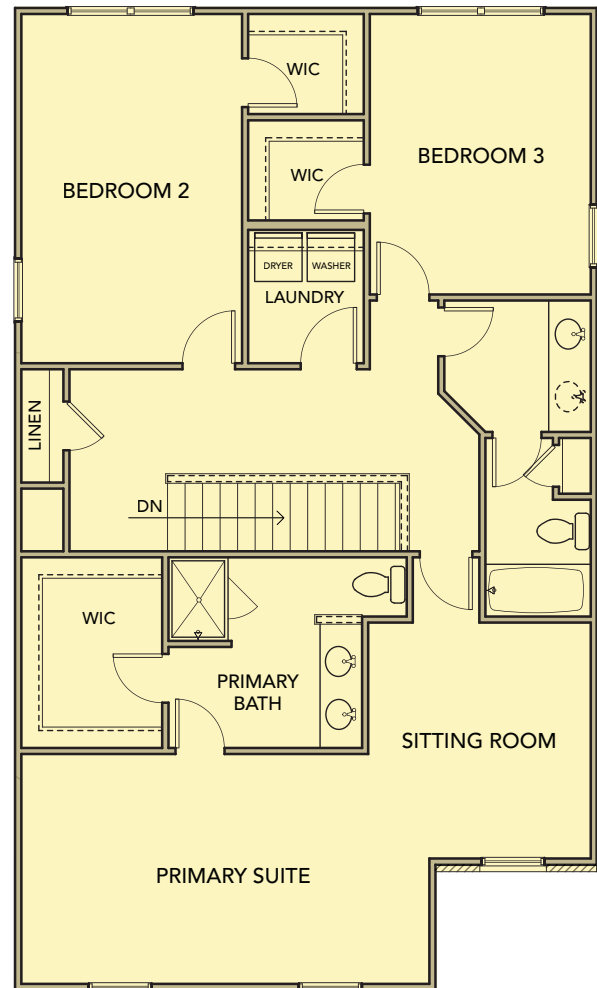
3 Bedrooms / 2.5 Baths

1,912 sq ft

Park Center Pointe



First Floor



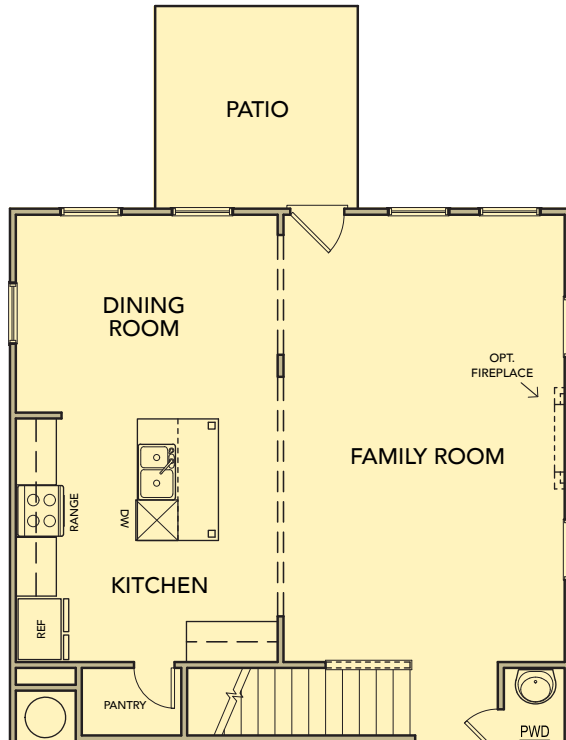
Second Floor

Wisteria

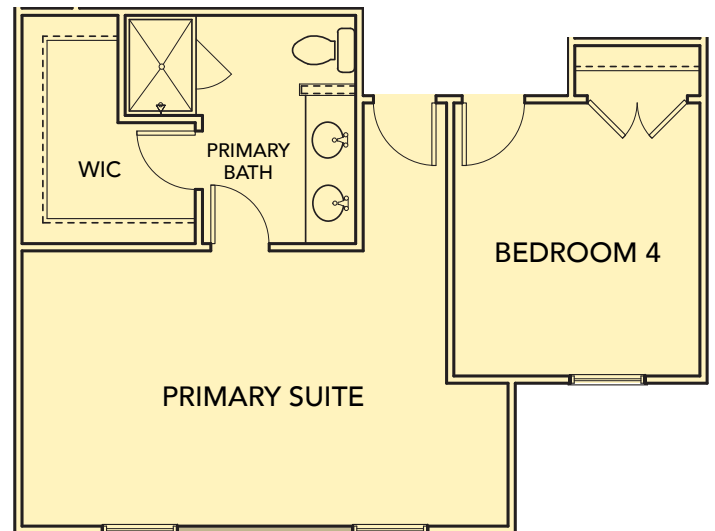
3 Bedrooms / 2.5 Baths

1,912 sq ft

Park Center Pointe



First Floor Plan With Opt. Extended Family Room



Second Floor Plan With Opt. Bedroom 4