

Spruce

4 Bedrooms / 2.5 Baths

2,100 sq ft



Elevation FH-1



Elevation FH-2

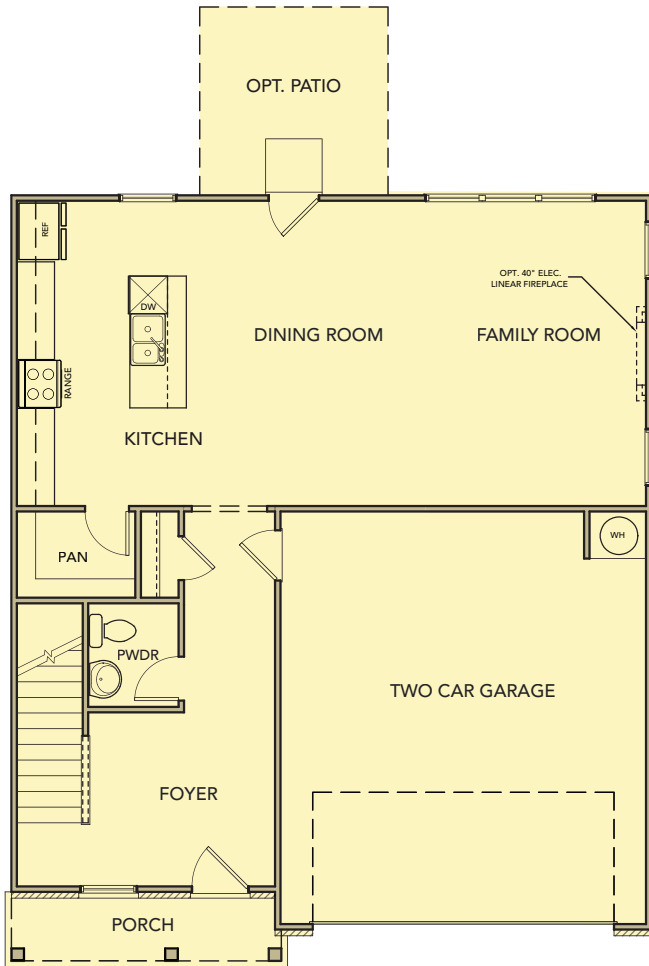
[KerleyFamilyHomes.com](https://www.KerleyFamilyHomes.com)

*Information believed accurate but not warranted and subject to change without prior notice. All drawings and elevation renderings are artistic representations only. Floor plan details & final decisions to be made by Kerley Family Homes. This document is for informational purposes only and is subject to change without notice. Please contact onsite agent for details regarding availability, lots and options. Updated 5.13.25

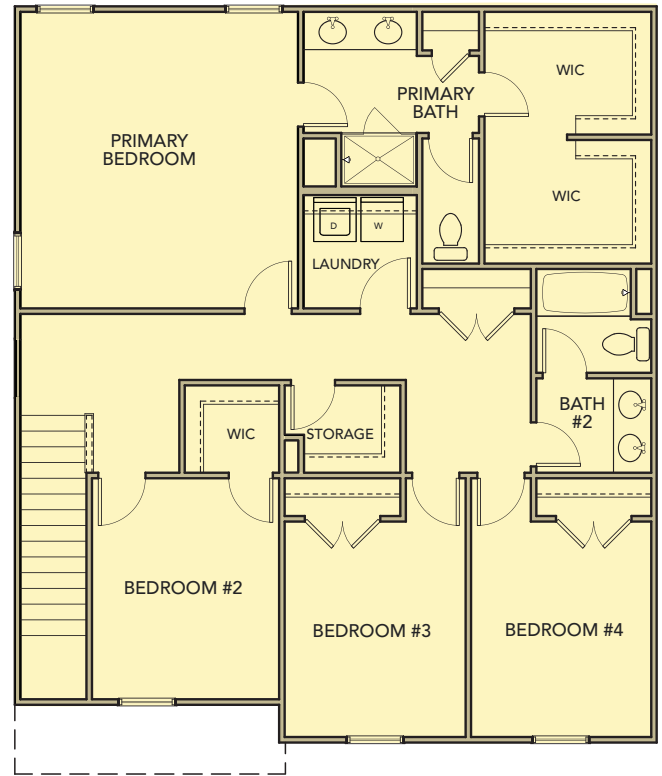


Spruce

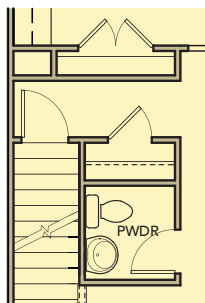
4 Bedrooms / 2.5 Baths
2,100 sq ft



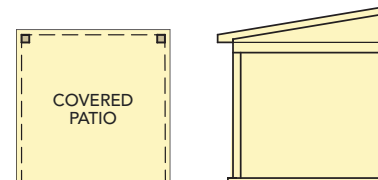
First Floor



Second Floor



First Floor Plan Change
w/ Opt. Basement
(New to This Plan)



Opt. Covered Patio