

# Richard II

5 Bedrooms / 4 Baths

3,963 - 5,008 sq ft

EXECUTIVE SERIES



Elevation AA



Elevation BB



Elevation CC



Elevation DD



Elevation FH-1



\*Information believed accurate but not warranted. All drawings and elevation renderings are artistic representations only. Floor plan details & final decisions to be made by Kerley Family Homes. This document is for informational purposes only and is subject to change without notice. Please contact onsite agent for details regarding availability, lots and options. Updated 12/7/22.

[KerleyFamilyHomes.com](https://KerleyFamilyHomes.com)

Information believed accurate but not warranted. Prices and offer subject to change without prior notice.



# Richard II

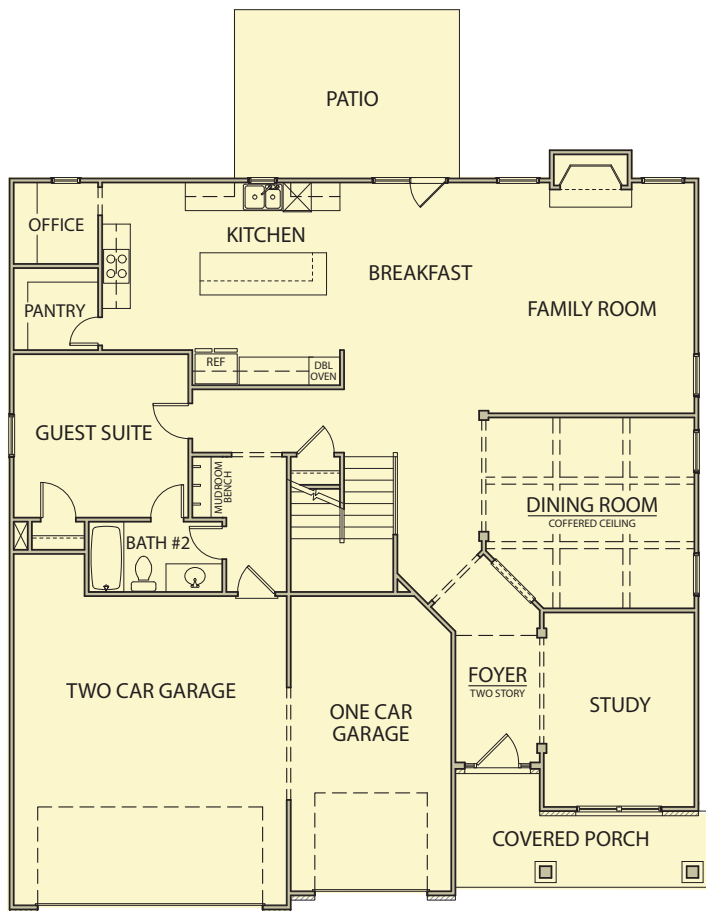
5 Bedrooms / 4 Baths

3,963 - 5,008 sq ft

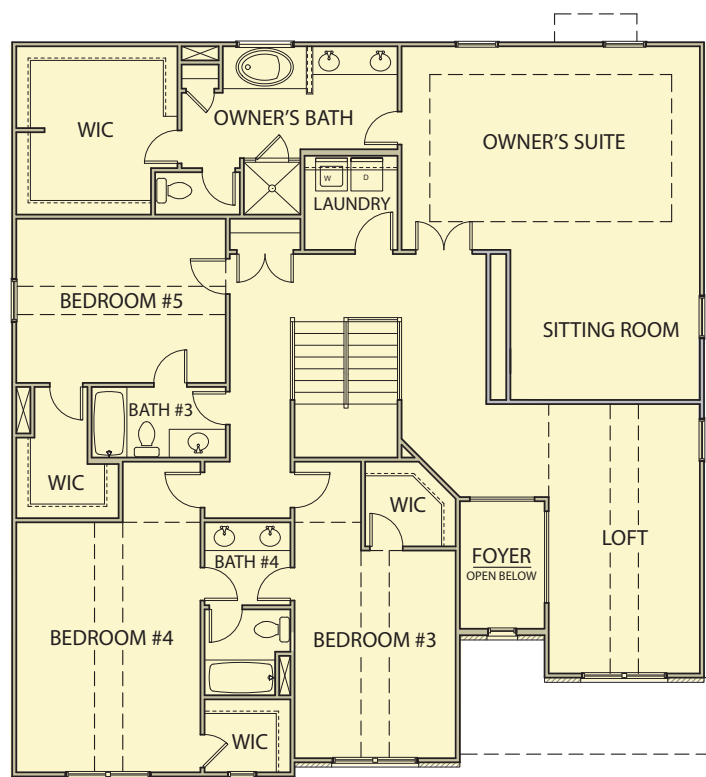
EXECUTIVE SERIES



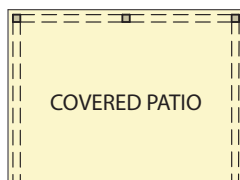
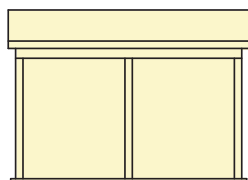
First Floor



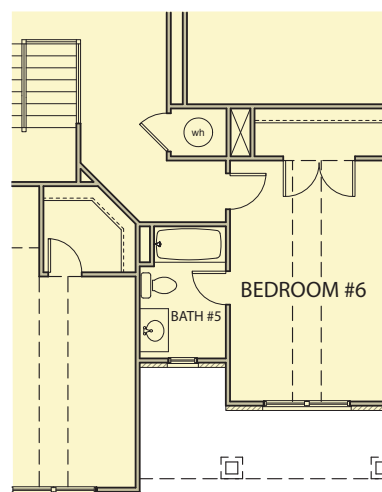
Second Floor



Opt. Covered Patio



Opt. Bedroom #6/Bath #5



\*Information believed accurate but not warranted. All drawings and elevation renderings are artistic representations only. Floor plan details & final decisions to be made by Kerley Family Homes. This document is for informational purposes only and is subject to change without notice. Please contact onsite agent for details regarding availability, lots and options. Updated 12/7/22.

[KerleyFamilyHomes.com](http://KerleyFamilyHomes.com)

Information believed accurate but not warranted. Prices and offer subject to change without prior notice.

