



The View at Groover's Lake

From the Mid \$300's

SALES CENTER

470-399-7631

Shan Walker

LOCATION

**2703 Jordan Lane
Lithia Springs, GA 30122**

FIND MORE ONLINE

Call **470-399-7631** for more information

KerleyFamilyHomes.com

*Information believed accurate but not warranted and subject to change without prior notice. All drawings and elevation renderings are artistic representations only. Floor plan details & final decisions to be made by Kerley Family Homes. This document is for informational purposes only and is subject to change without notice. Please contact onsite agent for details regarding availability, lots and options. Updated 2025-07-19



The View at Groover's Lake

From the Mid \$300's

2703 Jordan Lane Lithia Springs, GA 30122



COMMUNITY HIGHLIGHTS

[Request Community Information](#)

Bungalow Series Floor Plans

Only 31 Single Family Lots

Near Sweetwater Creek State Park and
Easy Access to I-20

SALES CENTER

470-399-7631

Shan Walker

Location

**2703 Jordan Lane
Lithia Springs, GA 30122**

FIND MORE ONLINE

Welcome to The View at Groover's Lake

Welcome to The View at Groover's Lake! We are building our new open concept floor plans on a select 31 lots, many with lakeside views. The View at Groover's Lake is offering three two story floor plans starting in the mid \$300s.

Features and Finishes: Spacious Kitchens with Granite Countertops and Stainless-Steel Appliances, 3 and 4 Bedrooms with Primary on Main Options, Optional Flex Spaces for Home Offices, Media Rooms and/or Playrooms, 2 Car Garages, Covered Decks and Patios

Family-Friendly Community Amenities: Swimming Pool and Pavilion, Tennis Courts, Playground, Walking paths and Common Areas

A Prime Location in Douglas County With the Best of Both Worlds:

Sweetwater Creek State Park (4 miles), Lithia Springs Park with youth sports and recreation (2 miles), Arbor Place Mall (8 miles), Historic Downtown Douglasville (6 miles), Local Restaurants, Shopping, and Entertainment

Douglas County School District: Lithia Springs Elementary School, Turner Middle School, Lithia Springs High School

Call **470-399-7631** for more information

KerleyFamilyHomes.com

*Information believed accurate but not warranted and subject to change without prior notice. All drawings and elevation renderings are artistic representations only. Floor plan details & final decisions to be made by Kerley Family Homes. This document is for informational purposes only and is subject to change without notice. Please contact onsite agent for details regarding availability, lots and options. Updated 2025-07-19



The View at Groover's Lake

From the Mid \$300's

2703 Jordan Lane Lithia Springs, GA 30122



Base Pricing by Floor Plan

Plan	Elevations	Beds	Baths	Sq Ft	Starting Price
BAYBERRY - SINGLE FAMILY	AA, BB, CC	3	2.5	N/A	\$364,900
BRADLEY	BB	3	2.5	N/A	N/A
REDBUD - SINGLE FAMILY	AA, BB, CC	4	2.5	N/A	\$364,900
WISTERIA - SINGLE FAMILY	AA, BB, CC	4	2.5	N/A	\$364,900

Additional bedrooms, bathrooms, and optional rooms like media rooms, lofts, and other options may be available.
Base Pricing does not include Basement or Lot Premium Costs. Contact for more details.

Call **470-399-7631** for more information

KerleyFamilyHomes.com

*Information believed accurate but not warranted and subject to change without prior notice. All drawings and elevation renderings are artistic representations only. Floor plan details & final decisions to be made by Kerley Family Homes. This document is for informational purposes only and is subject to change without notice. Please contact onsite agent for details regarding availability, lots and options. Updated 2025-07-19



The View at Groover's Lake
From the Mid \$300's
2703 Jordan Lane Lithia Springs, GA 30122



Available Homes

Homesite	Plan	Beds	Baths	Sq Ft	Price
HOMESITE 113		4	2.5	N/A	\$364,900
HOMESITE 118		3	2.5	N/A	\$387,811
HOMESITE 120		4	2.5	N/A	\$391,500

Call **470-399-7631** for more information

KerleyFamilyHomes.com



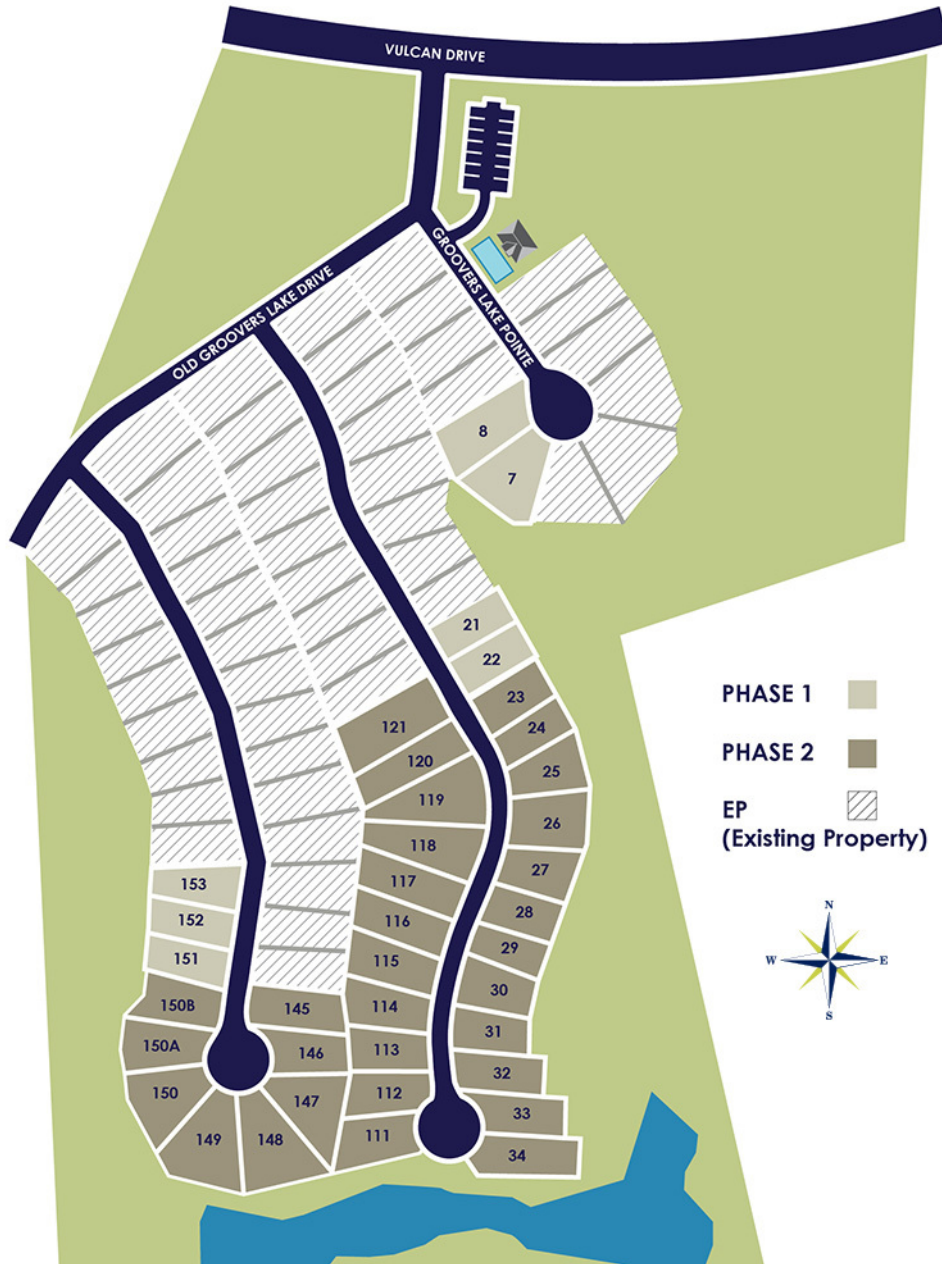
The View at Groover's Lake

From the Mid \$300's

2703 Jordan Lane Lithia Springs, GA 30122



Community Site Map



Call **470-399-7631** for more information

KerleyFamilyHomes.com

*Information believed accurate but not warranted and subject to change without prior notice. All drawings and elevation renderings are artistic representations only. Floor plan details & final decisions to be made by Kerley Family Homes. This document is for informational purposes only and is subject to change without notice. Please contact onsite agent for details regarding availability, lots and options. Updated 2025-07-19



The View at Groover's Lake

From the Mid \$300's

2703 Jordan Lane Lithia Springs, GA 30122



Standard Features

Spacious Kitchens

- 30" stained wall cabinets
- Granite countertops
- 50/50 stainless steel undermount sink
- Designer single handle Brushed nickel finish kitchen faucet with pullout sprayer
- Garbage disposal
- Pantry closet with wire shelving
- Appliances - Range, Microwave, Dishwasher, Refrigerator, Washer and Dryer
- Recessed refrigerator ice maker hook-up

Living Areas

- Choice of premium vinyl flooring (per plan)
- Choice of premium wall-to-wall carpet with 5 lb. padding on Stairs and Bedrooms
- Sherwin Williams Paint on interior walls with smooth ceiling *excludes garage
- 3-1/4" baseboard throughout the home
- Interior doors 6'-8" with 356 casing

Bathrooms

- Stained cabinets
- Cultured Marble Vanity countertops
- Designer Brushed Nickel Faucet Fixtures
- Designer Brushed Nickel Towel Bar, Towel Ring, & Tissue holder (per plan)
- Vinyl Flooring

Exterior Finishes

- 6 Panel Front Door
- Full Light Fiberglass patio door
- Vinyl single hung windows
- 5" seamless gutters with down spouts (per plan)
- Vinyl shutters (per plan, per elevation)
- Fiber cement siding
- Brick and Stone (per elevation)
- 2 exterior outlets (per plan)

Quality Features

- LED Flush Lights (per plan)
- Smart Tube with raised outlet in Family Room & Owners Suite
- 2 television jacks - Family Room, Owners Suite
- 1 telephone jacks
- 150 amp service
- Hardwired smoke detectors every bedroom w/battery back-up
- Carbon monoxide detectors
- Electric dryer hook-up
- Stamped steel garage door
- Concrete front porches, driveways
- 50 gallon water heaters
- 3/4" tongue & groove - screwed & glued down sub floor
- 9' Ceilings 1 st floor
- Fully engineered roof and floors
- 3 Tab - 25 year asphalt Roof Shingle
- Pestban® in wall pest treatment system
- Window Blinds

Energy Package

- R-38 insulation blown in attic of living areas
- R-13 wall insulation
- R-38 Fiberglas Batt insulation in vaulted living areas

- 15-SEER heating and air conditioning system,
- Programmable thermostats (zoned per plan)
- Energy Star® Appliances
- Energy efficient windows
- Blower door testing

Builder Quality

- Homeowner Warranty 1-2-10
- --One year workmanship & material warranty
- --Two year Systems warranty
- --Ten year Structural warranty
- Member of the Greater Atlanta Home Builders Association
- Certified Professional Home Builder

*Revised 07.19.2025

Call **470-399-7631** for more information

KerleyFamilyHomes.com

*Information believed accurate but not warranted and subject to change without prior notice. All drawings and elevation renderings are artistic representations only. Floor plan details & final decisions to be made by Kerley Family Homes. This document is for informational purposes only and is subject to change without notice. Please contact onsite agent for details regarding availability, lots and options. Updated 2025-07-19



The View at Groover's Lake

From the Mid \$300's

2703 Jordan Lane Lithia Springs, GA 30122



Kerley Family Homes' Approved Lender

Why Use an Approved Lender

When you use an approved lender, they take care of all the financing details. Our loan officers frequently work from our sales centers in various locations for easy access. The financing process runs more smoothly when you work with a lender who knows what the buyers needs from the beginning to the end of the building process

- Immediate Pre-Qualifications and Pre-Approval
- Competitive Interest Rates
- Different Programs to Choose From
- Consistent and Frequent Status Updates

Receive a Portion of Your Closing Costs

Kerley Family Homes is paying a portion of the closing costs on your new home when you use our preferred lender. Our experienced lender partners will walk you through the financing process, and you keep a portion of your closing costs. No strings attached.



Jill Bertolani - AVP - Senior Mortgage Banker

NMLS# 658806 | GA

Direct: 404.518.2201

Email: jill.bertolani@amerisbank.com



Theresa Garcia - Loan Officer

NMLS# 205112 | GA

Direct: 770.330.3234

Email: theresa.garcia@banksouth.com

Call **470-399-7631** for more information

KerleyFamilyHomes.com

*Information believed accurate but not warranted and subject to change without prior notice. All drawings and elevation renderings are artistic representations only. Floor plan details & final decisions to be made by Kerley Family Homes. This document is for informational purposes only and is subject to change without notice. Please contact onsite agent for details regarding availability, lots and options. Updated 2025-07-19

